



**Tāmaki  
Estuary  
Protection  
Society**  
EST. 1969

**TEPS  
Newsletter #62  
August 2023**

[View this email in your browser](#)

## TEPS News from Your Chair



The year is rushing past, complete with chilly temperatures, endless rainy days, and waterlogged soils underfoot.

Our TEPS AGM was in June at St Matthias Panmure Church Hall. A good turnout of members and the smooth re-election of the committee meant business was promptly concluded. We welcome David Tangye onto the committee and sadly farewell Dorthe Siggaard and Joanna Boileau, who are thanked for their contributions.

Jude Speight and Huia Murupaenga from the [Otara Waterways and Lake \(OWL\) Trust](#) and [Accelerating Aotearoa](#) updated us on their inspirational and prize winning

work raising environmental awareness with Otago youth. We have much to learn from their work.

Heavy rain disappointingly resulted in our decision to cancel our July Clean Up Tamaki Estuary (CUTE) Omaru Stream event due to health and safety considerations. We are looking forward to the next event on Sunday September 24th.

We continue to raise awareness about our local waterways. There is much to be done with pollution events continuing to happen, and levels of toxic chemicals in the sediment still increasing. Your support as members is essential for this work to continue. Thank you.

TEPS committee meetings are usually monthly, and TEPS members are very welcome to attend. Prospective committee members are welcome. Please email me at [Chair@TEPS.org.nz](mailto:Chair@TEPS.org.nz) or text 021 2044118 for information.

Dr Julie Chambers PhD  
TEPS Chairperson



Jude Speight (pictured above) and Huia Murupaenga from OWL provided an inspiring talk for TEPS members at our AGM.

**Pollutions Events Continue**

Pollution events continue to happen. Every pollution event needs to be reported to Auckland Council to raise awareness of these events happening.

**Auckland Council Pollution Hotline on 09 377 3107 (24 hours a day, 7 days) [Report pollution \(aucklandcouncil.govt.nz\)](http://aucklandcouncil.govt.nz)**

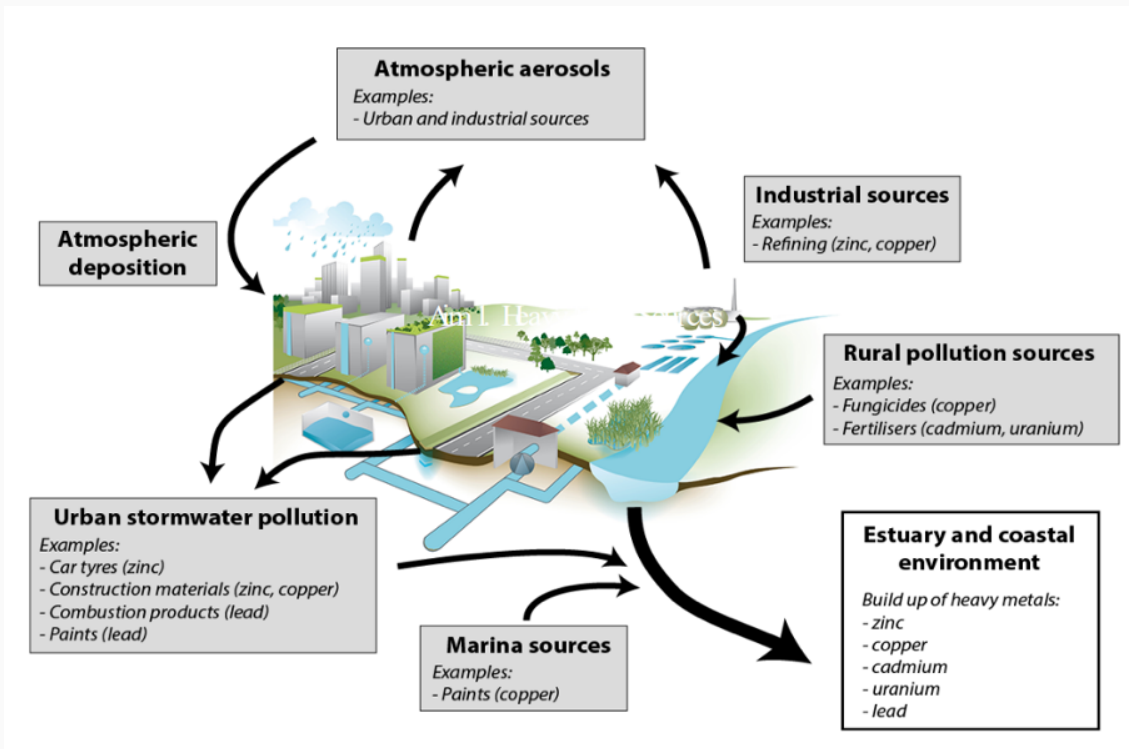


A foam pollution event in Pakuranga Creek (May)



In July Omaru Creek was smothered in heavy detergent foam, that flowed out into the Estuary.

## Tracing Toxic Metal Origins



It may be possible to identify the origins of the increasing amounts of toxic chemicals within Tāmaki Estuary sediment. This provides the real possibility of developing

effective ways to reduce their occurrence.

The Tāmaki Estuary Environment Forum (TEEF) recently received a presentation from a team developing a Metal Isotope Toolkit that can determine the sources of metals in urban environments. The team includes the University of Otago, Auckland Council, NIWA and The Australian National University.

Toxic metals in the sediment come from rainwater runoff that contains chemicals from car brake linings, roofing iron and garden chemicals.

Identifying the sources for these toxic chemicals may make it possible, through community action, that we may be able to raise awareness and develop preventive strategies.

This will involve all parties around the Estuary and its waterways working together. We are looking forward to future developments in this area.

Source:

Mills, G N and H Allen (2021). Marine sediment contaminant state and trends in Tāmaki Makaurau / Auckland 2004-2019. State of the environment reporting. Auckland Council technical report, TR2021/10

## Greetings from Melbourne

For the next few years my husband and I will be living in Melbourne, in the inner suburb of Williamstown. We have chosen to live in Williamstown as it is on the very shore of Port Philip and surrounded by beautiful wetlands.

I met up with Sandra from the community group 'Friends of Williamstown Wetlands'. The group was funded in 1987. Interestingly, the group started like TEPS as a response by the community against a proposed marina.

The group has a close collaboration with the Council's two park rangers who are overlooking this area. The diversity of plants and wildlife living in the wetlands is very high and the area is recognised as an important place for migratory birds.

Friends of Williamstown Wetlands have a monthly working bee. It can be planting, weeding and litter clean up. I am not sure how I will do on these events as Sandra was telling me that it is very common to see tiger snakes and other less poisonous snakes in the wetlands. Pest control by traps does not happen as the risk to the native fauna by this activity would be too high. One of the big pests in this area is foxes. I will keep you updated on the wonders and challenges of the wetlands and coastal area of Williamstown (and how to work around snakes!).

Dorthe Siggaard (the TEPS foreign correspondent)



View of part of the large wetlands area in Williamstown in the south west of Melbourne.



Signage we don't see in New Zealand!

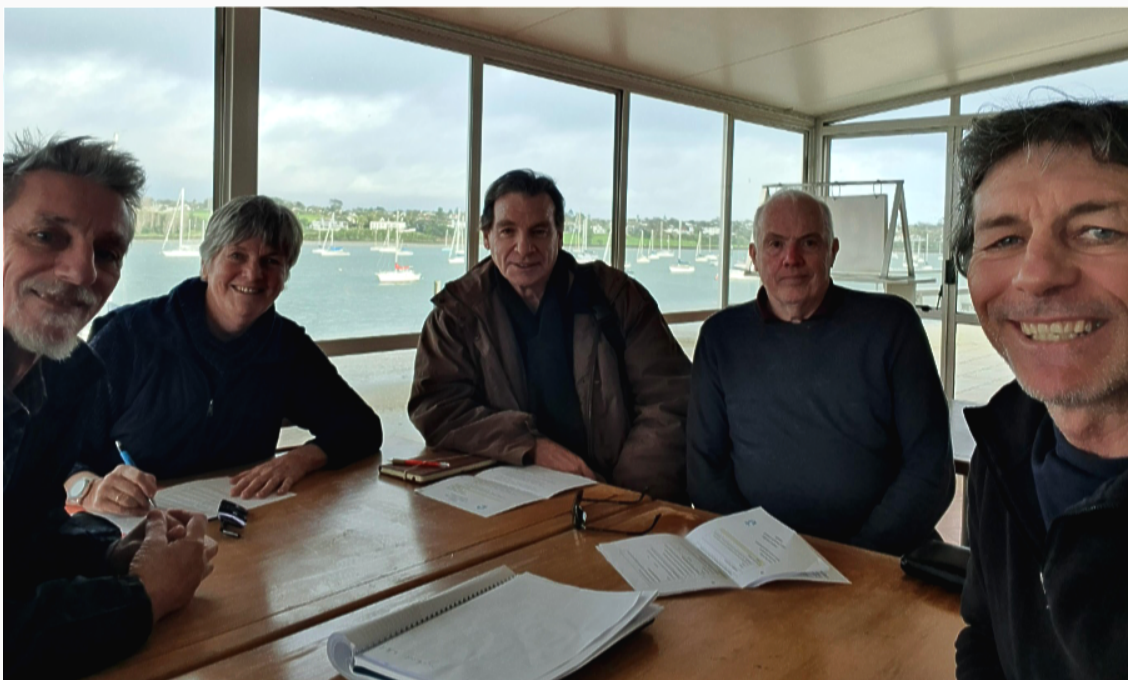
## New Venue for Committee Meetings

Thanks to the Panmure Yacht & Boating Club for hosting our TEPS committee meetings at their club rooms – 104 Kings Road, Panmure.

It is wonderful to be so close to the water as we discuss how to better care for the Estuary. Our first committee meeting for this year was accompanied by wild squalls across the estuary, rain lashing the windows, sunshine, and rainbows!

Thank you to St Matthias Church who previously kindly hosted our meetings.

TEPS committee meetings are monthly on Sunday afternoons during winter and Wednesday evenings during daylight saving. Members are welcome to attend. Please email me at [Chair@TEPS.org.nz](mailto:Chair@TEPS.org.nz) or call or text me on 021 2044118 for information.



First TEPS Committee meeting of 2023 at PY&BC - Lora was also in attendance, Jim and David gave apologies.

## Remembering Our Past

Colin Percy, visionary and advocate for the Estuary and its wildlife, a founding TEPS member, and Honorary Tahuna Torea Ranger, is now acknowledged with a memorial seat in the reserve.

The seat was installed and blessed with a ceremony, with refreshments afterwards provided by Chris and Pat. Local Board Member Margaret Voyce, Chris & Pat Barfoot, Tahuna Torea Rangers and TEPS members attended the event.

We are continuing the legacy. Life Member Chris Barfoot recently provided Julie Chambers with several historic TEPS treasures for future safekeeping. They included a typewritten copy of TEPS inaugural 1969 minutes, framed awards, and other items important to TEPS history.

It is interesting to read these records, and note the passion, commitment, and vision of our early TEPS members.



TEPS membership is \$5.00 for one year, from the 1<sup>st</sup> of April 2023 to the 31<sup>st</sup> of March 2024. Please renew by transferring \$5.00 to  
**TEPS account: 12 3057 0634462 001**

**Please remember to include your last name in the 'Particulars**

## Field'

---

Please pay your membership subscription for one year only as this helps our administration. Addition sums are welcome as a donation.

TEPS renewal/donation form is at <https://teps.org.nz/join-renew-donate/>

We accept membership renewals at our AGM.



Email:

**Julie Chambers:** [chair@teps.org.nz](mailto:chair@teps.org.nz)

Online:

[www.teps.org.nz](http://www.teps.org.nz)

<https://www.facebook.com/groups/tamakiestuary>

Phone:

**Julie Chambers:** Chairperson, mobile 021 204 4118



*Tāmaki Estuary Protection Society - preserving, protecting and improving the waters, life and shores of the Tāmaki Estuary.*

**Our mailing address is:**

Tāmaki Estuary Protection Society · 199 St Heliers Bay Rd, St Heliers, Auckland 1077 · New Zealand

Want to change how you receive these emails?

You can [update your preferences](#) or [unsubscribe from this list](#).

This email was sent to << Test Email Address >>

[why did I get this?](#) [unsubscribe from this list](#) [update subscription preferences](#)

Tamaki Estuary Protection Society · 47 Anderson Avenue · Point England · Auckland, Auckland 1072 · New Zealand

